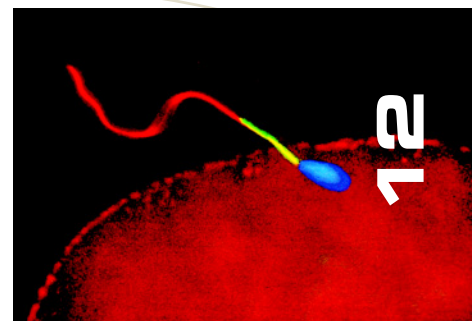


Chapter 12

Probes for Organelles



Section 12.1 — A Diverse Selection of Organelle Probes	471
Section 12.2 — Probes for Mitochondria	473
Visualizing Mitochondria in Cells and Tissues	473
MitoTracker Probes: Fixable Mitochondrion-Selective Probes	473
Properties of MitoTracker Probes	473
Orange-, Red- and Infrared-Fluorescent MitoTracker Dyes	473
MitoTracker Green FM Probe	474
MitoFluor Probes: Nonfixable Mitochondrion-Selective Probes	476
MitoFluor Green Probe	476
MitoFluor Red 589 Probe	476
MitoFluor Red 594 and MitoFluor Far Red 680 Probes	476
RedoxSensor Red CC-1 Stain	478
JC-1 and JC-9: Dual-Emission Potential-Sensitive Probes	478
Mitochondrion-Selective Rhodamines and Rosamines	479
Rhodamine 123	479
Tetrabromorhodamine 123	479
Rosamines and Other Rhodamine Derivatives, Including TMRM and TMRE	479
Reduced Rhodamines and Rosamines	480
Other Mitochondrion-Selective Probes	480
Carbocyanines	480
Styryl Dyes	480
Nonyl Acridine Orange	480
Carboxy SNARF-1 pH Indicator	481
CoroNa Red Chloride	481
Lucigenin	481
Yeast Mitochondrial Stain Sampler Kit	481
Avidin Conjugates for Staining Mitochondria	481
Antibodies to Mitochondrial Proteins	482
Monoclonal Antibodies Specific for Proteins in the Oxidative Phosphorylation System	482
Monoclonal Antibodies Specific for OxPhos Complex IV (Cytochrome Oxidase)	484
Monoclonal Antibodies Specific for Complexes I, II, III and V	485
Antibodies Against Other Mitochondrial Proteins	486
Mitochondrial Porin	486
Pyruvate Dehydrogenase	486
Mitochondrial Protein Extracts	486
Data Table	487
Product List	488
Section 12.3 — Probes for Lysosomes, Yeast Vacuoles and Other Acidic Organelles	489
LysoTracker Probes: Acidic Organelle-Selective Cell-Permeant Probes	489
LysoSensor Probes: Acidic Organelle-Selective pH Indicators	490
DAMP and Other Lysosomotropic Probes	491
DAMP	491
RedoxSensor Red CC-1 Stain	492

Other Lysosomotropic Probes	492
Ligands for Receptor-Mediated Endocytosis	492
Cell-Permeant Probes for Yeast Vacuoles	492
FUN 1 and FUN 2 Cell Stains: Vital Stains for Yeast	493
Monoclonal Antibodies for Yeast Cell Biology	493
Monoclonal Antibodies Specific for Yeast Vacuolar Membranes	493
Monoclonal Antibody Specific for the Yeast Vacuolar Lumen	494
Monoclonal Antibody Specific for the Yeast Endosomal Compartment	494
Monoclonal Antibody Specific for the Yeast Cytosol	494
Yeast Vacuole Marker Sampler Kit	494
FM 4-64 and FM 5-95	494
Data Table	495
Product List	496
Section 12.4 — Probes for the Endoplasmic Reticulum and Golgi Apparatus	496
ER-Tracker Blue-White DPX	497
Carbocyanine Dyes	497
Short-Chain Carbocyanine Dyes	497
Long-Chain Carbocyanine Dyes	497
Brefeldin A and Its Fluorescent Analogs	497
Brefeldin A	497
Fluorescent Brefeldin A	498
Fluorescent Ceramide Analogs	498
NBD C ₆ -Ceramide and NBD C ₆ -Sphingomyelin	498
BODIPY Ceramides and BODIPY Sphingomyelin	498
Monoclonal Antibody Specific for the Yeast Endoplasmic Reticulum	499
Antibodies to Mammalian and Yeast Golgi Proteins	500
Anti-Human Golgin-97	500
Monoclonal Antibody Specific for the Yeast Late-Golgi Compartment	500
Lectins for Staining the Golgi Apparatus	500
Wheat Germ Agglutinin and Concanavalin A	500
<i>Griffonia simplicifolia</i> Lectin GS-II	500
<i>Helix pomatia</i> (Edible Snail) Agglutinin	500
Data Table	501
Product List	502

Searching for Information?

We invest considerable effort to make this print version of the *Handbook* accessible and easy to use; however, the vast amount of information included here is much more readily accessed and searched at our Web site (www.probes.com). References in footnotes in the *Handbook* include full citations and, in most cases, links to the PubMed abstract at our Web site. Chemical structures

and full product information sheets are available for many of our products. Except for PDF files and a few other file formats, our Web site is completely searchable by keyword. Lists of relevant products can be located using partial words (such as “maleimide”). If additional information is required, it may be obtained from our Technical Assistance Department or from our distributors.