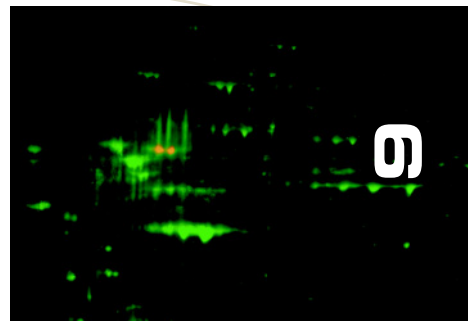


Chapter 9

Protein Detection and Proteomics Technology



| | |
|---|------------|
| Section 9.1 — Introduction to Protein Detection | 355 |
| Proteomics — A Rapidly Developing Field | 355 |
| Molecular Probes' Detection Technology for Proteomics | 355 |
| Multiplexed Proteomics | 355 |
| Molecular Probes' Reagents and Kits for Proteomics | 357 |
| Section 9.2 — Quantitation and Selective Purification of Proteins in Solution | 357 |
| NanoOrange Protein Quantitation Kit | 357 |
| CBQCA Protein Quantitation Kit | 359 |
| Other Reagents for Protein Quantitation in Solution | 360 |
| Fluorescamine | 360 |
| o-Phthaldialdehyde | 361 |
| SYPRO Red and SYPRO Orange Protein Gel Stains | 361 |
| Selective Protein Quantitation in Solution | 361 |
| MBDS: A Fluorogenic Reagent for Serum Albumins | 361 |
| Anti-Dinitrophenyl Antibody: A Reagent for Measuring Protein Carbonyls | 361 |
| EnzChek and Amplex Red Assay Kits | 361 |
| Selective Protein Purification | 362 |
| Glutathione Agarose and Anti-Glutathione S-Transferase Antibody for | |
| GST Fusion Protein Purification and Identification | 362 |
| Streptavidin Agarose and CaptAvidin Agarose | 362 |
| Streptavidin Acrylamide, CaptAvidin Acrylamide and Reactive Acrylamide Derivatives | 363 |
| DSB-X Biotin: Easily Reversible Binding to Streptavidin Agarose | 363 |
| Captivate Ferrofluid Conjugates | 363 |
| Data Table | 364 |
| Product List | 364 |
| Section 9.3 — Detection of the Total Protein Profile in Gels, on Blots and in Capillary Electrophoresis . . | 365 |
| SYPRO Protein Gel Stains | 365 |
| SYPRO Ruby Protein Gel Stain: Ultrasensitive Protein Detection in 1-D, 2-D and IEF Gels | 366 |
| SYPRO Orange and SYPRO Red Protein Gel Stains: For Routine Detection of Proteins in 1-D SDS-Polyacrylamide Gels | 368 |
| SYPRO Tangerine Protein Gel Stain: Sensitive Protein Staining without Fixation for Electroelution, Zymography and Classroom Use . . | 370 |
| SYPRO Protein Gel Stain Starter Kit | 370 |
| Protein Molecular Weight Standards | 370 |
| Fluorescent and Luminescent Total Protein Blot Stains | 370 |
| SYPRO Ruby Protein Blot Stain: A Versatile Blot Stain | 371 |
| SYPRO Rose Plus Protein Blot Stain: A Readily Reversible Protein Blot Stain | 372 |
| Reactive Fluorescent Dyes for Permanent Protein Blot Staining | 373 |
| Detection of Proteins on Protein Microarrays | 373 |
| Protein Detection in Capillary Electrophoresis | 373 |
| Use of SYPRO Dyes for Capillary Electrophoresis | 374 |
| Use of SYTO, SYBR and NanoOrange Dyes for Capillary Electrophoresis | 375 |
| Derivatization Reagents for Proteins | 375 |
| Data Table | 377 |
| Product List | 377 |

| | |
|---|------------|
| Section 9.4 — Multiplexed Proteomics for Detection of Specific Proteins in Gels and on Blots | 378 |
| Multiplexed Proteomics | 378 |
| Western Blot Stain Kits and Reagents | 378 |
| Amplex Gold Western Blot Stain Kits | 378 |
| Pro-Q Western Blot Stain Kits | 379 |
| DyeChrome Western Blot Stain Kits | 380 |
| Chemiluminescent Protein Detection on Western Blots | 382 |
| Chromogenic Protein Detection on Western Blots | 382 |
| Immunoreagents and Labeled Avidins for Use in Western Blot Detection | 383 |
| Fluorescent Avidin Conjugates | 383 |
| Primary Antibodies | 383 |
| Multiplex Western Blots: Detecting Multiple Protein Targets Simultaneously | 384 |
| DyeChrome Double Western Blot Stain Kit | 384 |
| Molecular Probes' Zenon Technology for Efficient Staining of Western Blots | 384 |
| Staining with Two Different Labeled Primary Antibodies | 385 |
| Fluorescence-Based Technologies for the Detection of Oligohistidine Fusion Proteins | 385 |
| Pro-Q Sapphire Oligohistidine Gel Stains | 385 |
| Pro-Q Oligohistidine Blot Stain Kits | 386 |
| Penta-His Antibody | 386 |
| Pro-Q Glycoprotein Stain Kits for Gels and for Blots | 386 |
| Pro-Q Emerald Glycoprotein Stain Kits for Gels and for Blots | 386 |
| Pro-Q Fuchsia Glycoprotein Stain Kits for Gels and for Blots | 388 |
| Pro-Q Glycoprotein Blot Stain Kits with Lectins | 389 |
| CandyCane Glycoprotein Molecular Weight Standards | 391 |
| Specialized Techniques for Detection of Specific Proteins in Gels | 391 |
| Detection of Calcium-Binding Proteins in Gels | 391 |
| Detection of Enzymes in Nondenaturing Gels | 392 |
| Detection of Protein Functional Groups in Gels and on Blots | 392 |
| Detection of Penicillin-Binding Proteins | 392 |
| Chemical Labeling of Nascent Proteins | 392 |
| Mitochondrial Protein Extracts | 393 |
| Product List — 9.4 Multiplex Proteomics for Detection of Specific Proteins in Gels and on Blots | 393 |
| Section 9.5 — Reagents for Peptide Analysis, Sequencing and Synthesis | 394 |
| N-Terminal Amino Acid Analysis | 394 |
| Peptide Sequencing | 394 |
| Peptide Synthesis | 394 |
| Labeling Peptides in Solution | 394 |
| Solid-Phase Synthesis of Labeled Peptides | 395 |
| Data Table | 396 |
| Product List | 396 |

Searching for Information?

We make considerable effort to make the information in this print version of the *Handbook* accessible and easy to use; however, the vast amount of additional information that is included herein is much more readily accessed and searched at our Web site (www.probes.com). Except for pdf files and a few other file formats, our Web site is completely searchable by keywords. Lists of relevant products can be located using partial word searches (such

as “maleimide”). Most of footnoted references in this print *Handbook* are linked to the full citation and the PubMed abstract. Chemical structures and full product information sheets are available for many of our products. If additional information is required, it can be obtained from our Technical Assistance Departments or from our distributors.